

The book, "The Secret Sips: A Compendium of Curiosities," is a unique and imaginative guide to a world of magical elixirs. Within its pages, you will find a wide range of potions, each with its own unique effect and usage. From a trail of shimmering goo to a skin that turns as soft and fluffy as a stuffed animal, the book offers a fantastical array of options for the adventurous mind. Each potion is described in detail, with its ingredients, usage, and any special notes or warnings included. This book is the product of a collaboration between OpenAI's language model, GPT-3, and the creative minds at Midjourney, and offers a unique and surreal look at the possibilities of magic and alchemy.



***THE SECRET  
SIPS:***

***A COMPENDIUM  
OF CURIOSITIES***







### ***Pixelum Infusion***

#### **Description:**

This mysterious potion has the ability to turn anything it comes into contact with into pixels. The drinker will have the power to turn objects, people, and even their surroundings into a 8-bit video game-like appearance.

#### **Ingredients:**

1 drop of Glowing Magenta Liquid

5 Petals of Digital Flowers

3 Grains of Binary Dust

A pinch of Rainbow Circuit Powder

10 Microchips harvested from an unknown source

A swirl of Binary Code

#### **How to Prepare:**

Gather all ingredients in a large glass beaker.

Slowly pour in the Glowing Magenta Liquid.

Add the Petals of Digital Flowers, Grains of Binary Dust, and Rainbow Circuit Powder.

Crush the Microchips into the mixture.

Stir the potion in a clockwise direction while reciting an incantation in Binary Code.

The potion is ready when it begins to emit a low-pitched hum and pulsates with a rainbow aura.

Drink quickly and enjoy the newfound power of Pixelation.



### ***S’rholm-Lyctir Potion”***

A potion that enhances the aura of the drinker with a soft, glowing light that changes color depending on their mood. It provides a gentle reminder to stay mindful and in touch with one’s emotions.

#### Ingredients:

Gloamburst Drops  
Shinefrost Essence  
Mooddust

#### Instructions:

Gently heat Gloamburst Drops in a non-reactive pot until they start to emit a soft blue light.

Carefully mix in Shinefrost Essence, stirring constantly until well combined.

Sprinkle Mooddust into the mixture and stir until the powder has fully dissolved.

Allow the mixture to cool completely, then strain into a dark glass bottle.

To use, shake the bottle gently and drink the potion in one go. The aura illuminating effect should last for several hours.

### ***Potion of Atmo-spectrovision***

This potion is a mixture of highly reactive and luminous agents, when consumed it allows the drinker to visualize and perceive the various chemicals in the atmosphere for a short period of time.

Ingredients:

Luminesce Drops

Etherflux Essence

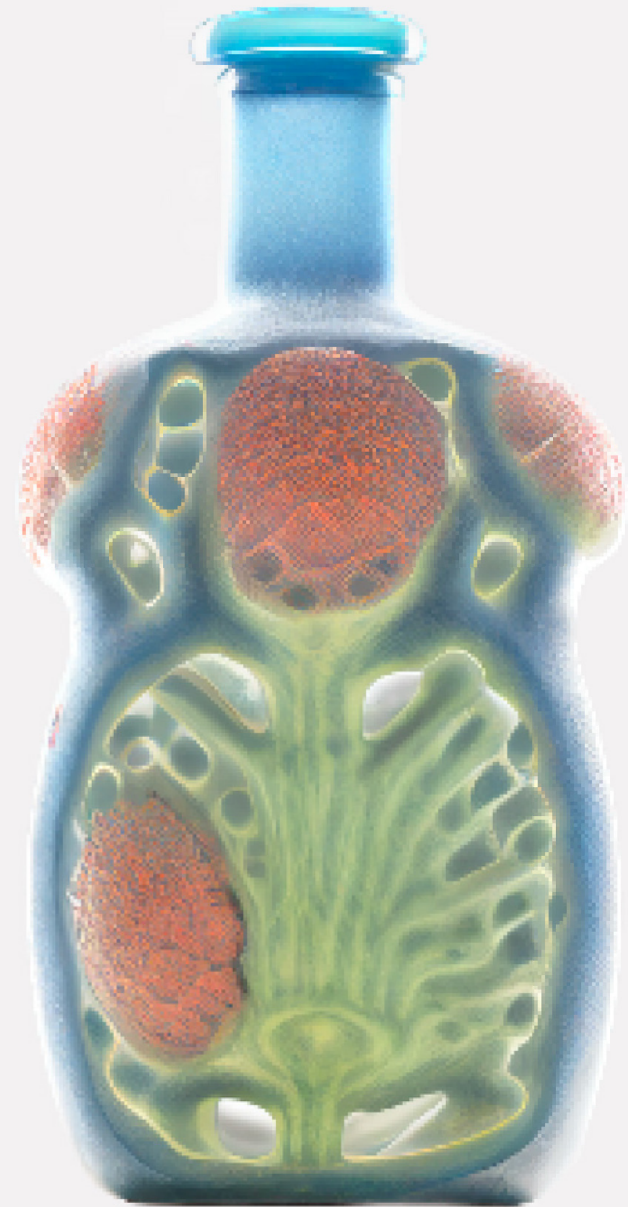
Atmosphere Dust

Spectrocrystals

Usage:

Simply dispense a few drops of the potion into the eyes, just like an eye drop. Wait for a few moments, and the user will be able to see the chemical composition of the air around them. This effect lasts for approximately 10 minutes.

Note: Please be advised that this potion should only be used in well-ventilated areas. Overuse may cause temporary blindness.







### ***Potion of Flatification***

This potion, when consumed, transforms the drinker into a two-dimensional black and white manga figure.

Ingredients:

Flatlines: extracted powder from the special ink used to create the first manga

Squashbloom Petals: petals from a rare plant that grows in parallel dimensions

Planar Powder: a powder made from ground up gemstones that have the ability to warp space and time

Usage:

Crush the Squashbloom Petals and add them to a pot of boiling water.

Slowly sprinkle in the Planar Powder while stirring the mixture.

Finally, add the Flatlines to the pot and stir until the potion turns a solid shade of purple.

Drink the potion and within seconds, you will feel yourself being pulled into a different plane of existence.

Warning: This transformation is not permanent and will last only for a limited time, during which it may be difficult to interact with three-dimensional objects.





### ***Potion of Plushification***

Description: This potion imbues the drinker with a soft and fluffy texture, akin to a stuffed animal. Upon consumption, the drinker's skin will become soft to the touch and take on a plush appearance.

History: This potion was discovered in the back of an old toy shop by an adventurous young alchemist. They were curious about the strange ingredients they found and decided to mix them together, resulting in the unexpected transformation into a soft and fluffy being. The young alchemist has since shared their discovery with fellow alchemists and the Potion of Plushification has become a popular choice for those seeking a temporary escape from reality.

Ingredients:

Flufffeathers

Stuffspores

Plushpetals

Softsoap

Cozysyrup

Usage:

Crush Flufffeathers and mix with Stuffspores and Plushpetals

Add a pinch of Softsoap and stir until fully combined

Pour Cozysyrup into mixture and stir thoroughly

Drink mixture and wait for the transformation to take place



### ***Vocrift Transformation Potion***

A mysterious blend that transforms the drinker into a line of words, allowing them to slip secret messages to others without arousing suspicion.

#### Ingredients:

**Callisto Ink:** Imbued with the power of the stars, Callisto Ink captures the essence of written language and holds the key to transforming the drinker into a line of words.

**Letratouch Drops:** These tiny, shimmering drops are harvested from the rare Letratouch flowers that grow in the hidden valleys of the alphabetic mountains. They enhance the flexibility and fluidity of the written words, allowing them to move and twist in unexpected ways.

**Grammablossom Essence:** Extracted from the delicate Grammablossom flowers that bloom in the shadows of grammar groves, this essence imbues the written words with grammatical structure, making them coherent and meaningful.

#### Instructions:

Gather all the ingredients and mix them together in a crystal vial.

Write the line of words you wish to become onto the left hand using the mixture.

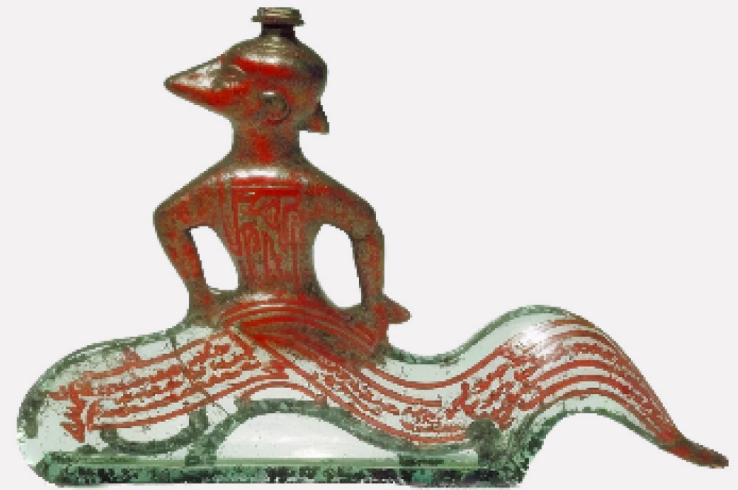
Before the ink dries, slap the hand onto the forehead.

The transformation will take effect immediately, and the drinker will become a line of words, ready to be passed along as a secret message.

The transformation will last for approximately 30 minutes before the drinker returns to their normal form.

**Note:** It is important to be mindful of the words used, as they will be a direct reflection of the thoughts and emotions of the drinker at the time of the transformation. Choose wisely!







### ***“Chrono-Nourish”***

This potion was used by ancient farmers in the Far East to enhance the growth of jade beans under their wheat fields. The potion was created in response to a period of drought that threatened crops and food supplies.

#### Ingredients:

- Dewdrops from a Solar Eclipse
- Powdered Pearl from a Clam of 1000 years
- Essence of a Singing Willow Tree
- Crushed petals of the First Rose of Spring
- Finely ground roots of the Longevity Mushroom
- Ground Fossils of the Jade Bean Plant

#### Instructions:

Mix ingredients in a brass cauldron and simmer under the light of the full moon. Allow to cool and then sprinkle onto the soil of the wheat fields before planting the jade beans. The potion will cause the jade beans to grow at an accelerated pace, producing a larger yield and helping to sustain the community through difficult times.

### ***Potion of Glisten Trail***

This potion creates a trail of shimmering, gooey gloop wherever the drinker walks, making it difficult for others to follow. The gloop trail is not only visually appealing but also serves as an effective means of concealing the drinker's path.

#### Ingredients:

Glimmer Drops: Adds a sparkle to the gloop, giving it a more eye-catching appearance.

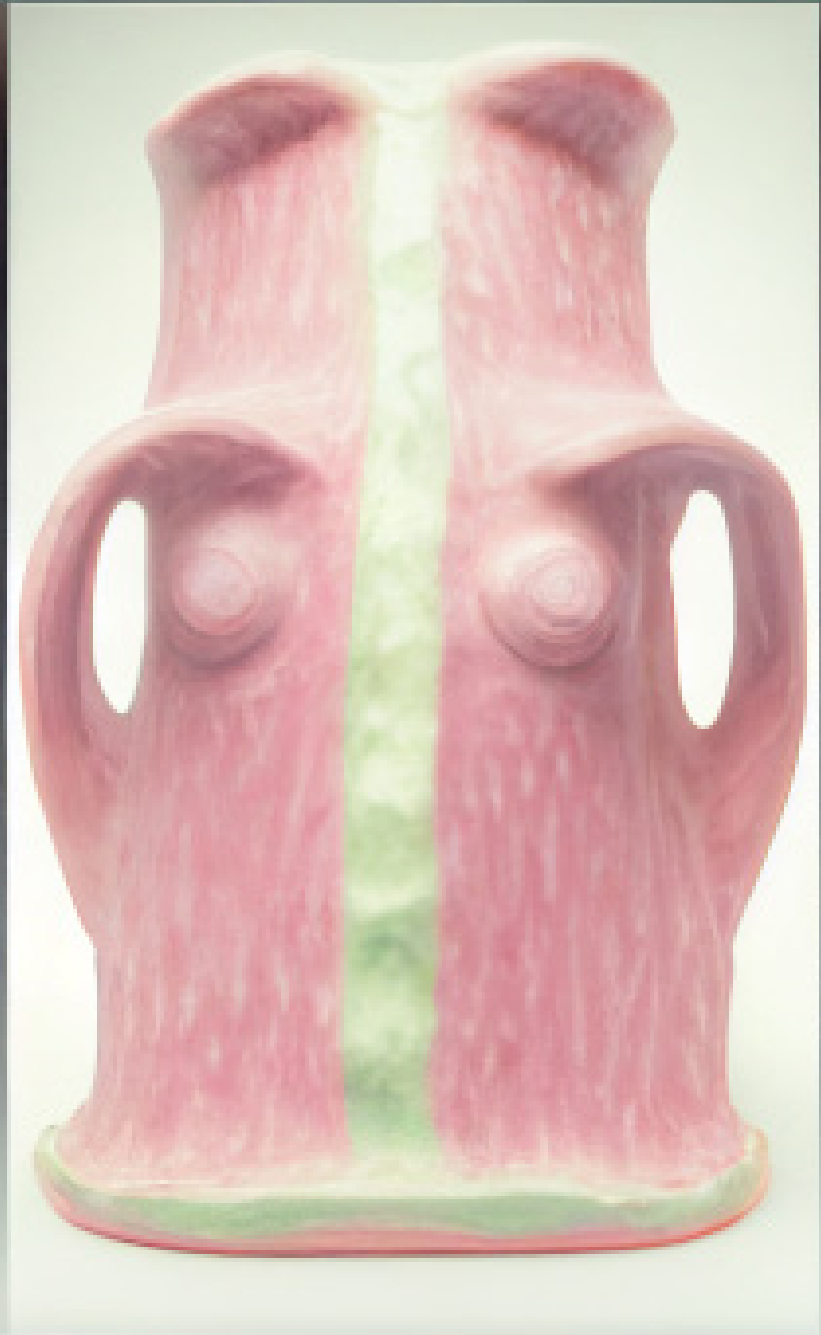
Gloopbreeze Essence: Gives the gloop its gooey texture, making it more difficult to walk through.

Glistenmud: Adds a lustrous sheen to the gloop, making it look even more slippery.

Other ingredients may include: Gloopjuice, Gloopsparkles, and Gloopglimmers.

#### Usage/Instructions:

To make the Potion of Glisten Trail, mix equal parts of Glimmer Drops, Gloopbreeze Essence, and Glistenmud in a cauldron. Heat over a low flame, stirring constantly, until the ingredients are well combined. Pour into a flask and allow to cool. Drink to activate the trail.





### ***Fluxus Nectar***

This mysterious potion is said to have fallen from the sky as a gift from the aliens to the inhabitants of a remote planet. It has a sweet, yet pungent aroma. The local people believe that drinking the potion will grant them the ability to communicate with the stars and access inter-dimensional portals.

Ingredients:

Blue Star Dust

Galactic Sugar

Cosmic Ray Essence

Alien Honeydew Nectar

Usage:

Drinking the potion is said to bring about a heightened state of consciousness and a deep connection to the universe. The drinker may experience vivid visions, astral projection and telepathy with extraterrestrial beings. The potion should be consumed in small doses, as excessive consumption may lead to unpredictable and potentially dangerous consequences.



