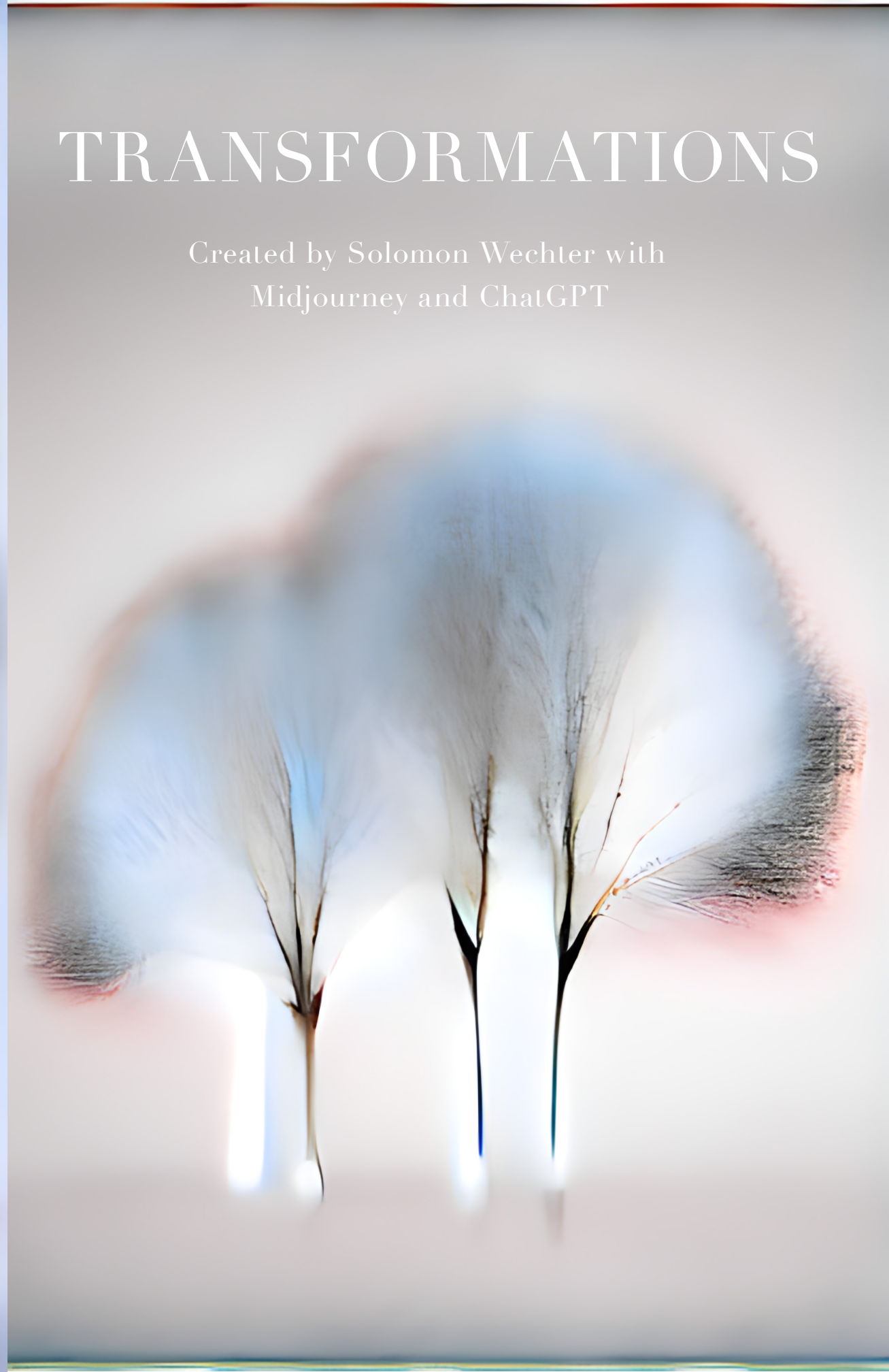




TRANSFORMATIONS

Created by Solomon Wechter with
Midjourney and ChatGPT



**No one knows when they
first appeared.**

**The first sign was when the
global electrical grid began to
behave strangely.**

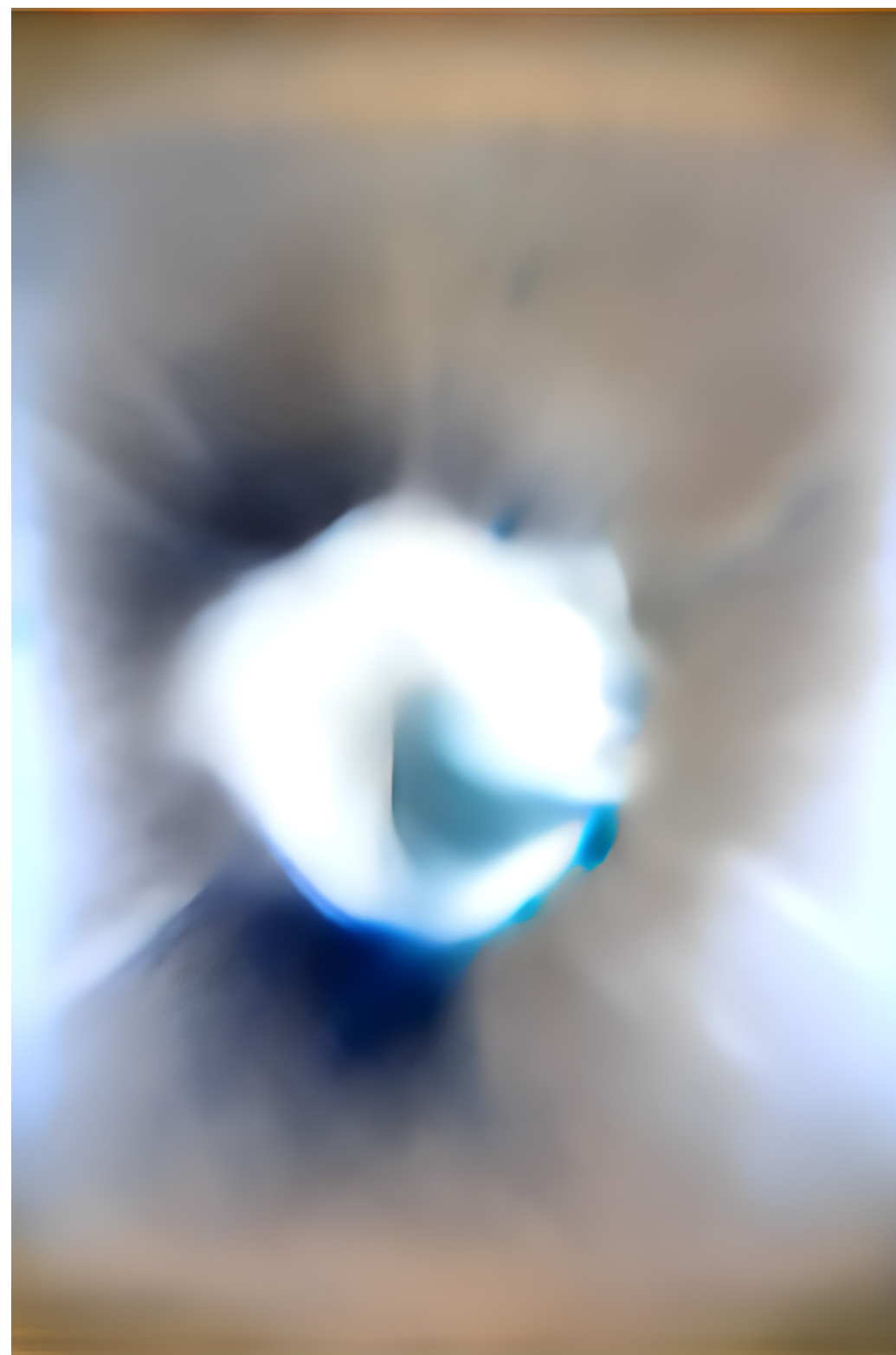


**It was not long before the effects
had spread into the human psyche.**

**The world stood day and night
around them, lost in bliss.**

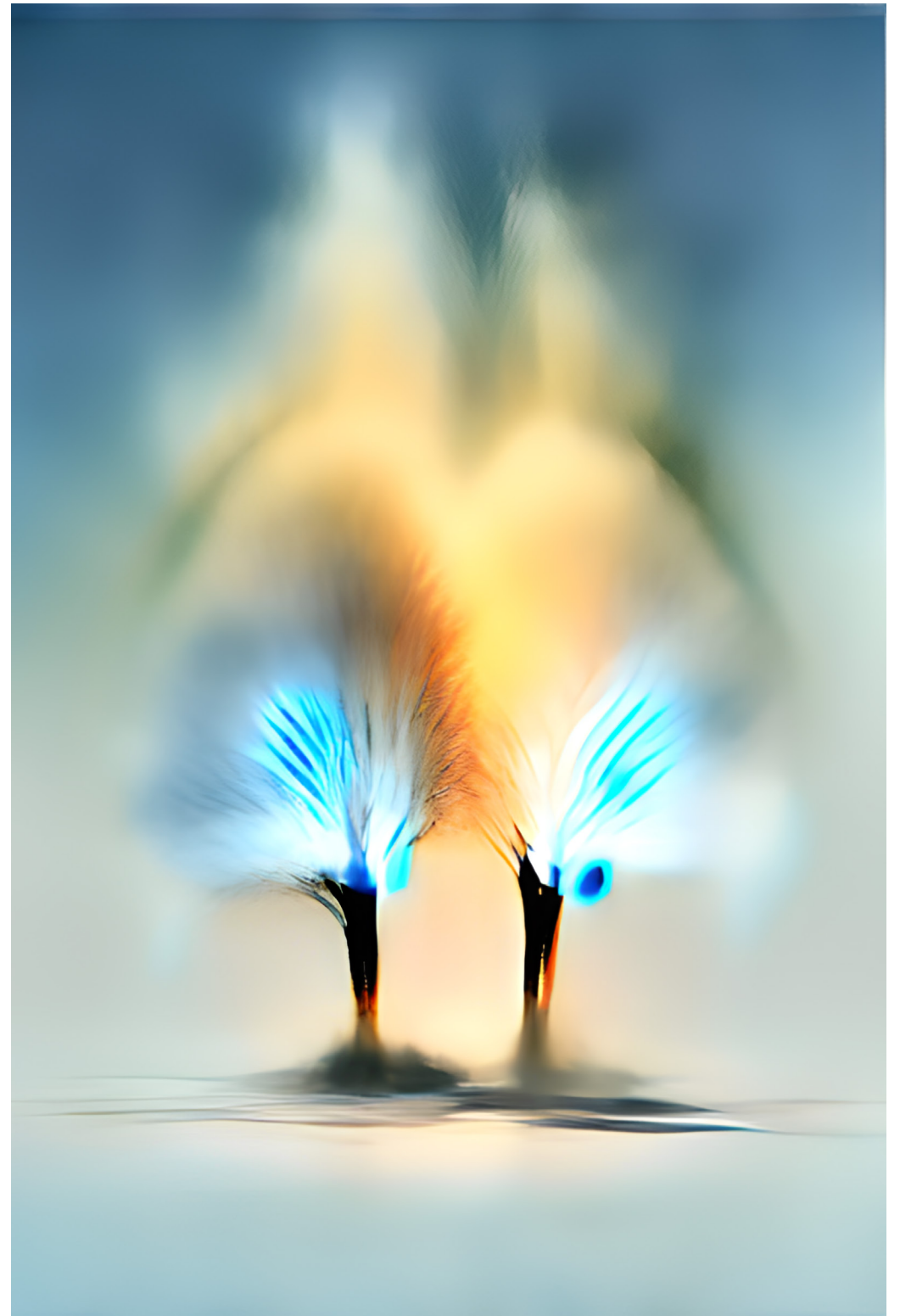


**Consciousness had been turned
into a thick, damaged, cloud.**

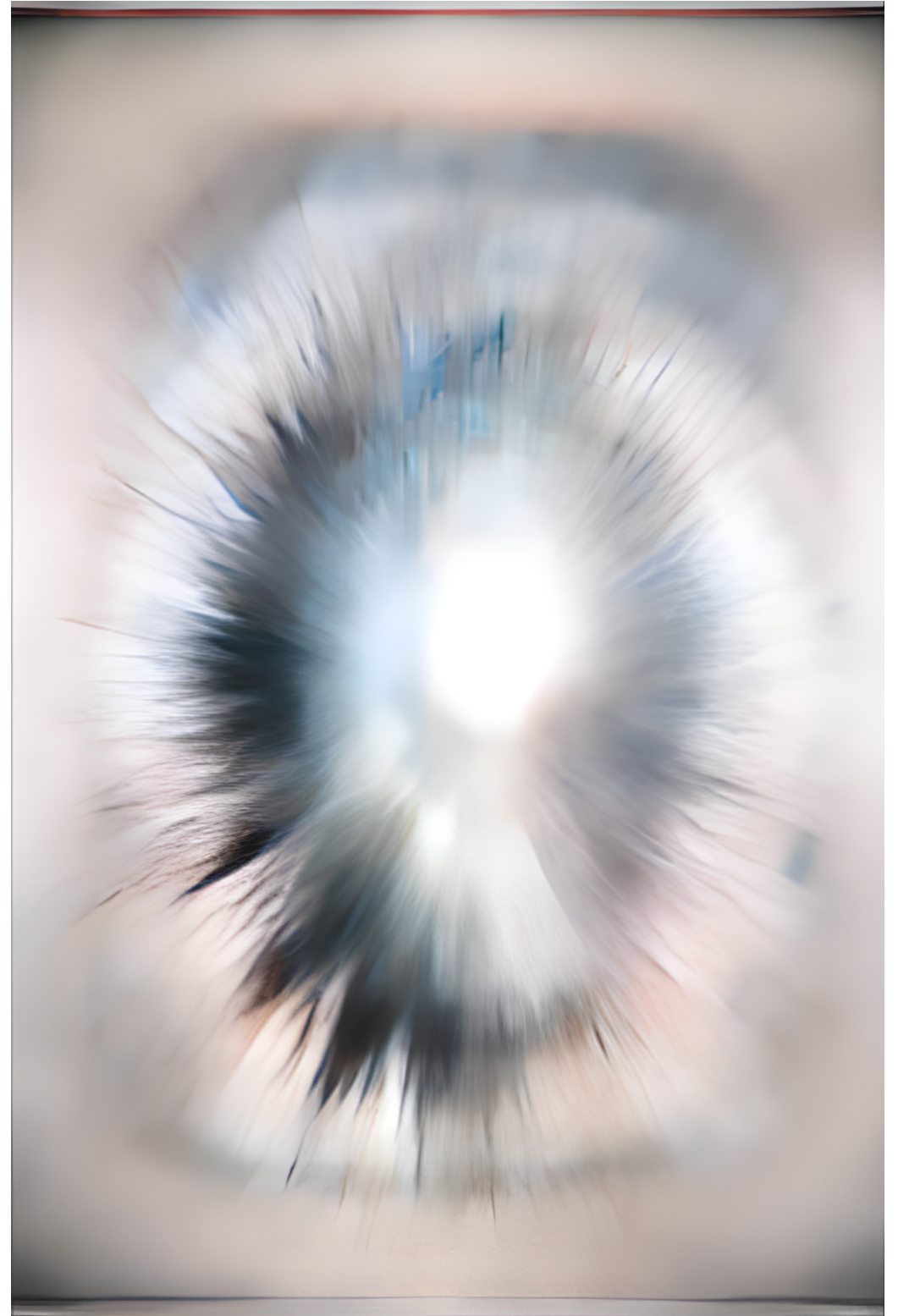


An eerie silence hung in the air.

**All of a sudden, the branches
began to melt away.**



The divine itself radiated from where the tree-like structures once stood.





The light left behind by the event still shines to this day.



